

Floor Plan - St. Charles-I

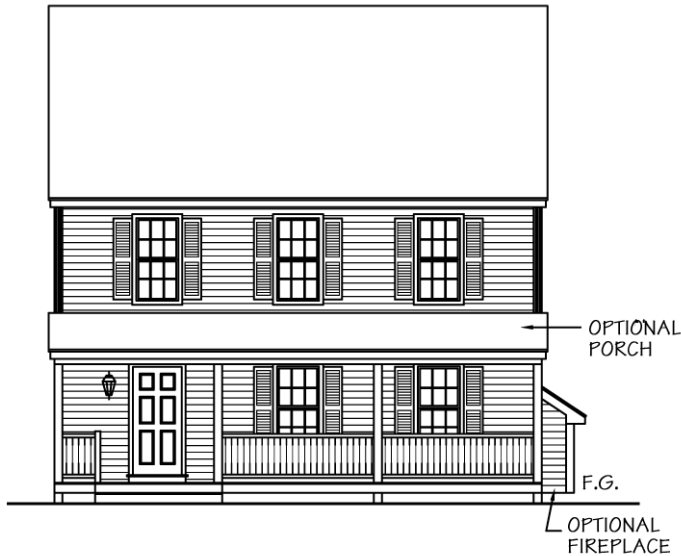


**CRESTWOOD
ESTATES**

Meredith, New Hampshire

Office: 1-800-350-4442

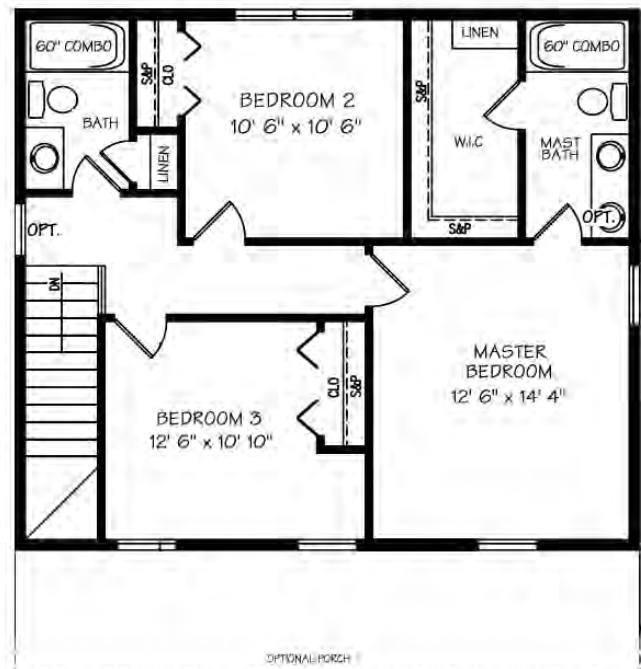
Site: 603-279-0796 • Site Fax: 603-279-1078



This beautiful home is designed with family in mind. The open kitchen and dining area creates open space for family meal time or entertaining. The master bedroom is spacious and includes a private master bath. The optional farmer's porch makes a nice addition for sitting and relaxing on warm summer evenings. Other potential options include a fourth bedroom and an attached Garage.

The St. Charles-I

- 3 Bedrooms
- 2-1/2 Baths
- 1,560 sq.ft.



Built By:

**CALUMET
CONSTRUCTION, LLC**

Please Note: All Kitchen layouts are representative only. This flyer is for illustrative purposes only and is not a legal contract. Floor Plans shown are one variation of homes illustrated. Other variations and sizes available. Please speak with a Sales Associate for more details and options. Layouts and options are subject to change.



Marketed Exclusively By:

**Innovative
Realty**

66 Gilcrest Road • Londonderry, New Hampshire 03053 • (603) 425-2300