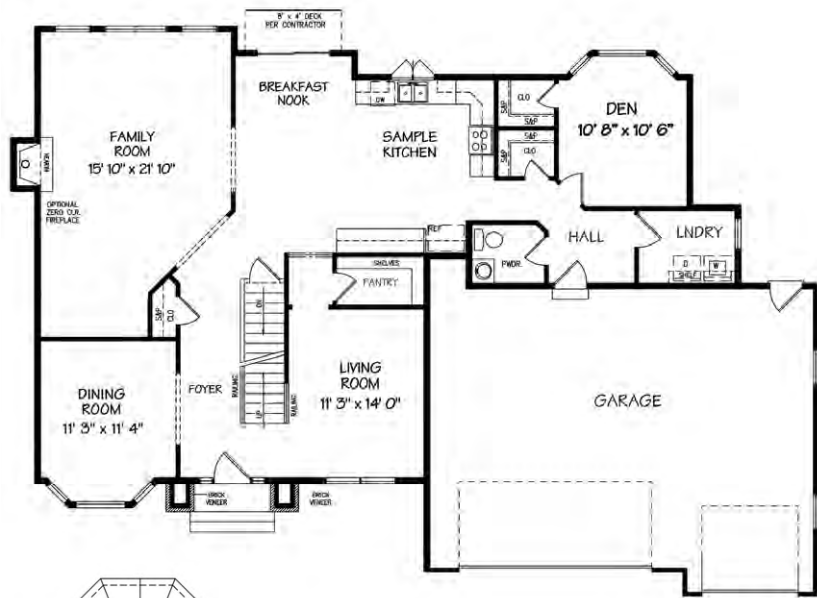


# Floor Plan - Park Place



Meredith, New Hampshire  
 Office: 1-800-350-4442  
 Site: (603) 279-0796  
 Site Fax: (603) 279-1078

This is a spectacular home with contemporary, light filled living space. The comfortable, casually elegant first floor includes a dramatic Family Room that leads to a formal Living Room with distinctive bay window. The spacious, open Kitchen/Breakfast area is perfect for meal preparation or entertaining. The secluded Den area, perfect for that in-home office or ideal for guests, completes this level. The handsome, central staircase leads to the second floor and its four ample bedrooms, including a Master Suite with large walk-in closet and Master Bath that boasts a corner whirlpool, private water closet room, double sinks and standalone oversized shower. The three car Garage with the oversized third bay that can accommodate oversized vehicles.



### The Park Place

- 4 Bedrooms
- 2 Full Baths
- 1 Half Baths
- 3,034 sq.ft.
- Attached Garage

Built By:



**Please Note:** All Kitchen layouts are representative only. This flyer is for illustrative purposes only and is not a legal contract. Floor Plans shown are one variation of homes illustrated. Other variations and sizes available. Please speak with a Sales Associate for more details and options. Layouts and options are subject to change.



Marketed Exclusively By:

**Innovative Realty**

66 Gilcrest Road • Londonderry, New Hampshire 03053 • (603) 425-2300