

Floor Plan - The Vermont

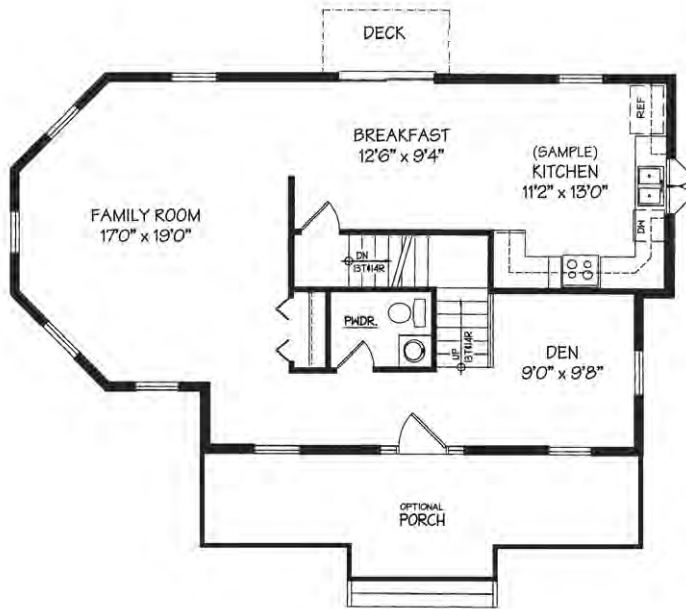


Meredith, New Hampshire
 Office: 1-800-350-4442
 Site: 603-279-0796 • Site Fax: 603-279-1078

Open-face gables, accent cedar style shingles, and double-hung window sashes create this home's exterior visual appeal. Inside, a comfortable and modern design caters to the active family requiring more functional than formal space. The oversized kitchen will be a favorite hangout. The first floor den is perfect for a home office or quiet get away for kids to do home work. The turned staircase leads to the second-floor master suite which includes a luxurious bath, and walk-in closet. Two additional bedrooms share a full bath that includes a second floor laundry room.

The Vermont

- 3 Bedrooms
- 2-1/2 Baths
- 1,688 sq.ft.



Built By:



Please Note: All Kitchen layouts are representative only. This flyer is for illustrative purposes only and is not a legal contract. Floor Plans shown are one variation of homes illustrated. Other variations and sizes available. Please speak with a Sales Associate for more details and options. Layouts and options are subject to change.



Marketed Exclusively By:

Innovative Realty

66 Gilcrest Road • Londonderry, New Hampshire 03053 • (603) 425-2300